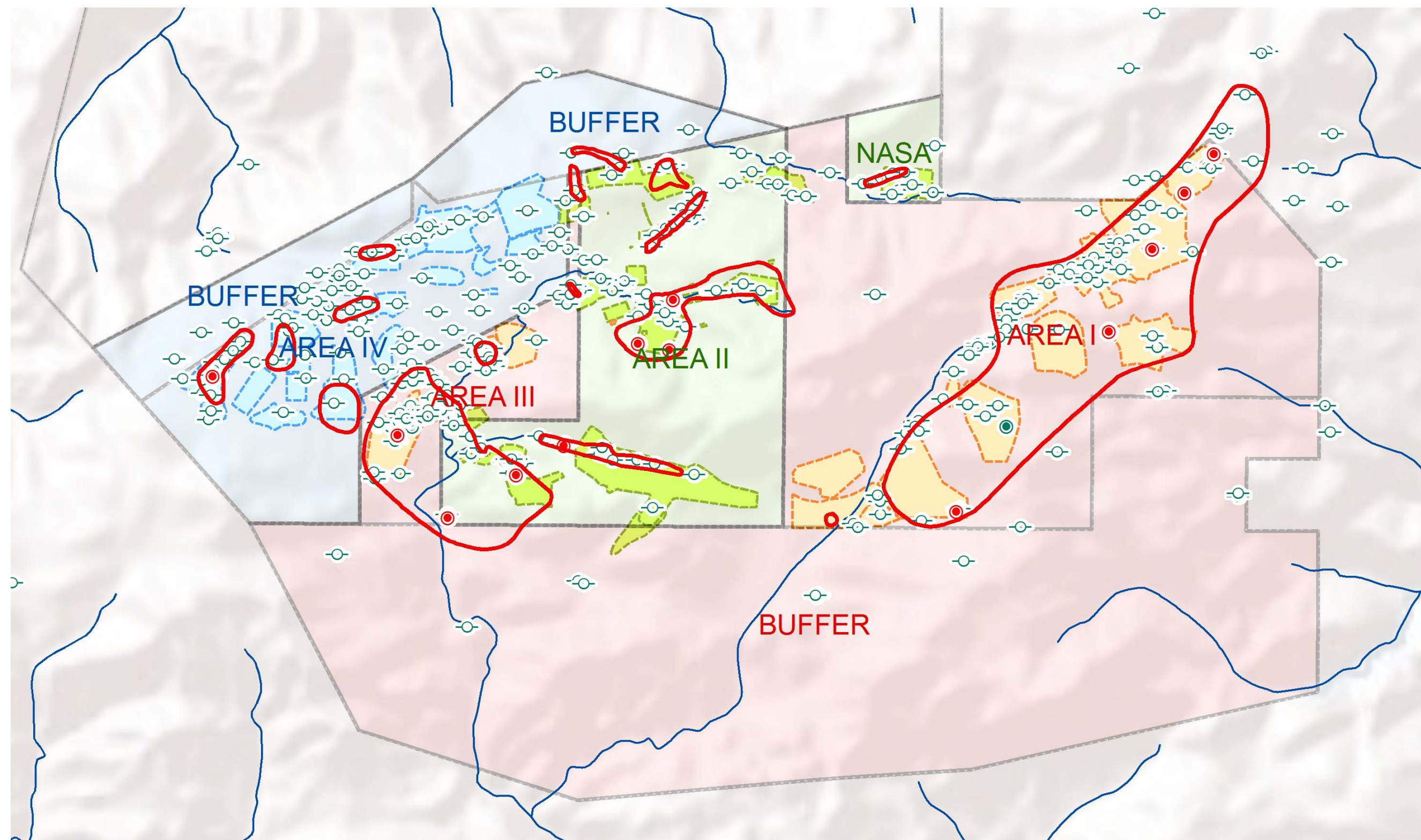




BOEING'S RCRA CORRECTIVE ACTION PROCESS AT SSFL



Background

Boeing soil cleanup areas at SSFL include approximately 1940 acres.

- 2850 total acres at SSFL
- 21 sites (covering approximately 162 acres)

Boeing activities were primarily research, development, and testing for liquid fueled rocket engines and components (1950-2006)

- Chemical contamination from operations is primarily solvents, fuels, metals
 - Also contamination from byproducts of those substances

Boeing characterization program covers all Boeing areas

- A proximately 1800 acres not associated with operations were screened, and have been sampled where activities or soil disturbances are identified.

Current Status

Surficial Media (Soils) Program

- Soil Sampling Field Work complete for all 30 soil sampling activities
 - Over 7500 soil samples and 650 soil vapor samples collected since 2012
- Characterization (RFI) Reports in progress
 - 9 multi-volume report packages scheduled
 - 2 Report Packages submitted in June and July of 2015
 - Under review by DTSC

Groundwater Program

- Source zone characterization work is at the individual site level, the sitewide groundwater program incorporates all sites
- Sitewide data gap work in progress
 - Four (4) additional groundwater wells being installed
- Treatability studies for groundwater cleanup
 - In-situ chemical oxidation testing in complete
 - Laboratory testing for biological reduction of VOCs in nearing completion

Upcoming Work

- Continue work on soil and source zone characterization
 - Evaluate data, submit more RFI Reports for DTSC review
- Continue to fill sitewide groundwater data gaps
- Groundwater Interim Measure
 - Construction Complete
 - Start-up late spring/early summer