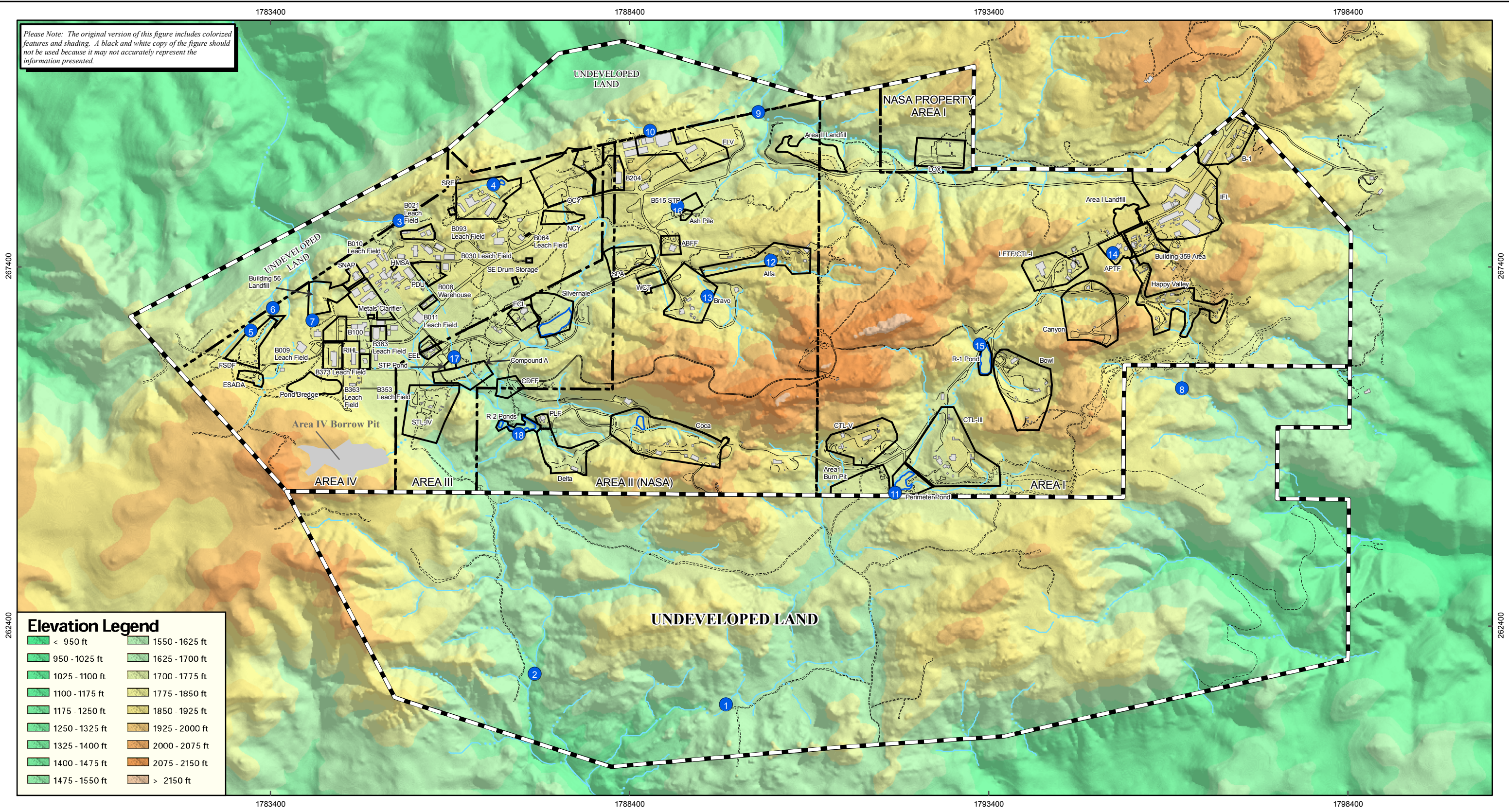


Please Note: The original version of this figure includes colored features and shading. A black and white copy of the figure should not be used because it may not accurately represent the information presented.



Elevation Legend

< 950 ft	1550 - 1625 ft
950 - 1025 ft	1625 - 1700 ft
1025 - 1100 ft	1700 - 1775 ft
1100 - 1175 ft	1775 - 1850 ft
1175 - 1250 ft	1850 - 1925 ft
1250 - 1325 ft	1925 - 2000 ft
1325 - 1400 ft	2000 - 2075 ft
1400 - 1475 ft	2075 - 2150 ft
1475 - 1550 ft	> 2150 ft

RFI SITES

AREA I

- SWMU 4.1 - B-1 Area
- SWMU 4.2 - Area I Landfill
- SWMUs 4.3, 4.4 and AOC - Instrument and Equipment Laboratories (IEL)
- SWMU 4.5, 4.6 - LOX Plant Former Sump/Clarifier and Drum Disposal Area
- SWMU 4.7 - Component Test Laboratory III (CTL-III) Area
- SWMU 4.8 - Area I Burn Pit
- SWMU 4.9, AOC - Advanced Propulsion Test Facility (APTF) Area
- SWMU 4.12 - Laser Engineering Test Facility (LETF)/Component Test Lab I (CTL-I) Area
- SWMU 4.14 - Canyon Area
- SWMU 4.15 and AOC - Bowl Area and Building 901 Leachfield
- SWMU 4.16 - Area I Reservoir (R-1 Pond)
- SWMU 4.17 - Perimeter Pond
- AOC - Building 359 Sump
- AOC - Happy Valley Area
- AOC - Component Test Laboratory V (CTL-V)

AREA II

- SWMU 5.1 - Area II Landfill
- SWMU 5.2 - ELV Final Assembly, Building 206
- SWMU 5.5 and AOC - Building 204 Area
- SWMU 5.6 - Former Incinerator Ash Pile
- SWMU 5.7 - Hazardous Waste Storage Area Waste Coolant Tank (WCT)
- SWMU 5.9, 5.10, 5.11 - Alfa Area
- SWMU 5.12, 5.13, 5.14, 5.15 - Alfa/Bravo Skim Pond and Bravo Area
- SWMU 5.18, 5.19 - Coca Area
- SWMU 5.20, 5.21, 5.22 - Propellant Load Facility (PLF)
- SWMU 5.23 - Delta Area
- SWMU 5.26 - R-2A and R-2B Ponds
- AOC - Building 515 Sewage Treatment Plant
- AOC - Storable Propellant Area (SPA)
- AOC - Alfa/Bravo Fuel Farm
- AOC - Coca/Delta Fuel Farm

AREA III

- SWMUs 6.1, 6.3, AOC - Engineering Chemistry Laboratory (ECL) Area
 - SWMU 6.4 Compound A Facility
 - SWMU 6.5 Systems Test Laboratory IV (STL-IV) Area
 - SWMU 6.8 - Silverdale Reservoir
 - SWMU 6.9 - Environmental Effects Laboratory (EEL)
 - AOC - Sewage Treatment Plant (STP) Pond Area
- AREA IV**
- SWMU 7.1 - Building 56 Landfill
 - SWMU 7.3 - Former Sodium Disposal Facility (FSDF)
 - SWMU 7.4 - Old Conservation Yard (OCY)
 - SWMU 7.5 - Building 100 Trench
 - SWMU 7.6 - Radioactive Materials Handling Facility (RMHF)

AREA IV (cont)

- SWMU 7.7 - Rockwell International Hot Laboratory (RIHL)
- SWMU 7.8 - New Conservation Yard (New Con)
- SWMU 7.9 - ESADA Chemical Storage Area
- SWMU 7.10 - Former Coal Gasification PDU
- AOC - Former Hazardous Materials Storage Area (HMSA)
- AOC - Chemistry Laboratory Metals Clarifier
- AOC - Pond Dredge Area
- AOC - SE Drum Storage Yard
- AOC - SNAP Facility
- AOC - Boeing Area IV Leach Fields
- AOC - DOE Area IV Leach Fields

Legend

- SSFL Property Boundary
- Administrative Boundary
- RFI Boundary
- Building
- Pond
- Drainage
- Dirt Road
- Road
- NPDES Outfall

RFI Site Location Map

SANTA SUSANA FIELD LABORATORY

Date: Sep 28, 2006
 FILE: r:\rock\plots\arcmap\RFI-Report\RFI-Report-group6_RFI_Location.mxd



FIGURE 1-3



MAP COORDINATES IN STATEPLANE, NAD 27, ZONE V